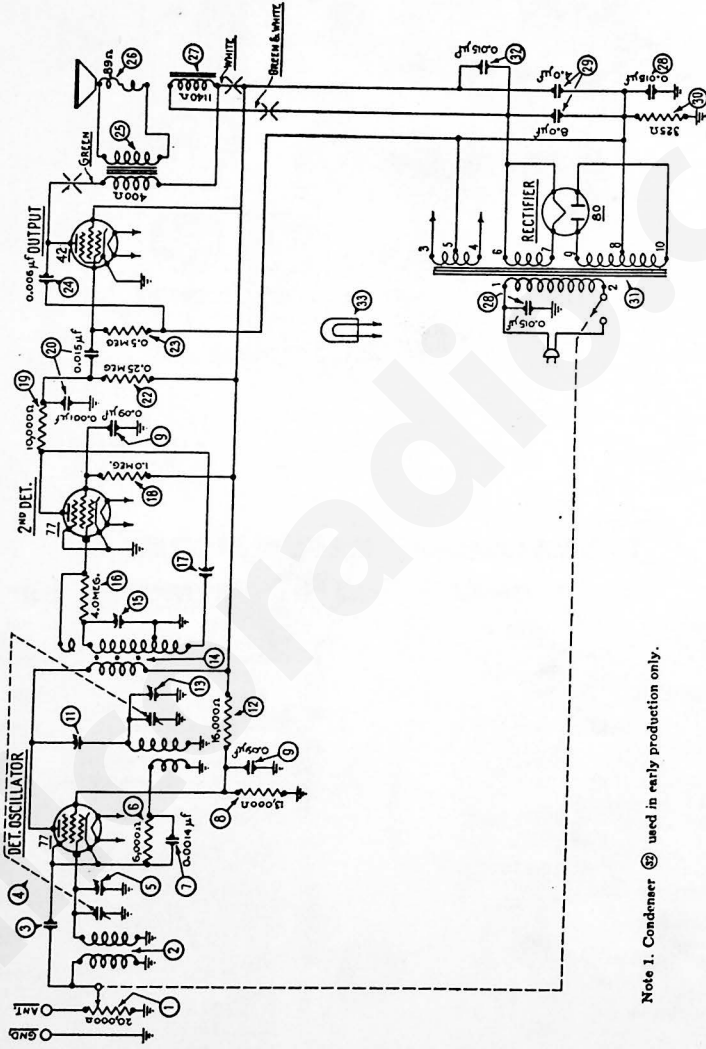


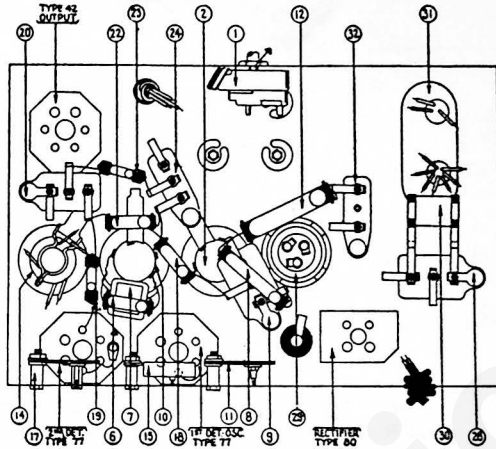
MODEL 84



Note 1. Condenser 25 used in early production only.

I. F. 460 K. C.

MODEL 84



REPLACEMENT PARTS FOR MODEL 84

No. on Figs.	Description	Part No.	No. on Figs.	Description	Part No.
①	Volume control and on-off switch...	33-5055	Ⓜ	Resistor (240000 ohms: Red, yellow, yellow).....	4410
②	Antenna transformer.....	32-1310	Ⓝ	Resistor (490000 ohms: Yellow, white, yellow).....	4517
③	Condenser—capacity obtained by twisting ends of two leads together.....	31-1122	Ⓞ	Condenser .006 mfd.....	7625H
④	Tuning condenser assembly.....	31-1122	Ⓟ	Output transformer.....	32-7019
⑤	Compensator (antenna).....	Part of ①	Ⓠ	Voice coil and cone assembly.....	36-3014
⑥	Resistor (6000 ohms: Blue, Black, Red).....	7352	Ⓡ	Field coil and pot assembly.....	36-3243
⑦	Condenser (.0014 mfd.).....	7007	Ⓢ	Condenser (.015—.015).....	3793AD
⑧	Resistor (13000 ohms: Brown, orange, orange).....	3766	Ⓣ	Condenser (electrolytic—4.0—8.0 mfd.).....	30-2013
⑨	Condenser (double .09 .09 mfd.)...	4989 AK	Ⓤ	Resistor (wire wound 325 ohms)...	7465
⑩	Oscillator transformer.....	32-1311	Ⓟ	Power transformer.....	32-7180
⑪	Compensator (I.F. primary).....	04000A	Ⓠ	Condenser (.015).....	3793 C
⑫	Resistor (18000 ohms: Brown, blue, orange).....	7500	Ⓡ	Pilot lamp.....	8008
⑬	Compensator (OSC HP).....	Part of ①	Ⓢ	Four prong socket.....	7544
⑭	I.F. transformer.....	32-1313	Ⓣ	Six prong socket.....	7547
⑮	Compensator (I.F. sec.).....	0-4000Y	Ⓤ	Tube shield.....	8005
⑯	Resistor (4 meg.: Yellow, black, green) inside ⑭.....	6010	Ⓟ	Knob.....	27-4038
⑰	Compensator (regeneration).....	0-4000	Ⓠ	Pointer.....	27-5007
⑱	Resistor (1 meg.: Brown, black, green).....	4400	Ⓡ	AC cord and plug.....	L-943A
⑲	Resistor (10000 ohms: Brown, black, orange).....	4412	Ⓢ	Speaker cord.....	L 1474
Ⓜ	Condenser (.015-.001).....	7702-B	Ⓣ	Base shield plate.....	29-1724
			Ⓤ	Chassis mounting screw.....	W-490
			Ⓟ	Chassis mounting washer.....	W 315
			Ⓠ	Output transformer shield.....	36 3025
			Ⓡ	Dial scale.....	27-5031

NOTE: In later production tube shield 36, No. 8005 is replaced by tube shield No. 28-1820 with lid No. 28-1821.